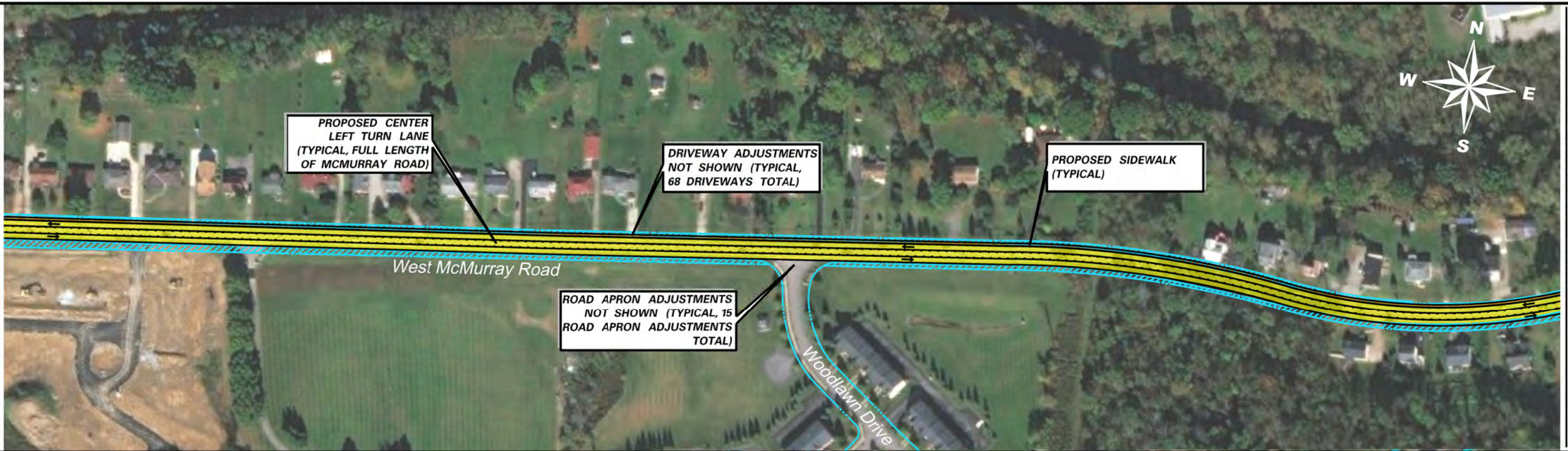


MATCHLINE SEE FIGURE 1009-08



MATCHLINE SEE BELOW

MATCHLINE SEE ABOVE



MATCHLINE SEE NEXT SHEET

LEGEND

- PROPOSED LANE
- PROPOSED SHOULDER
- PROPOSED SIDEWALK
- PROPOSED/RECONSTRUCTED BRIDGE
- PROPOSED RIGHT-OF-WAY

EXISTING RIGHT-OF-WAY LINE

Northern Washington County Corridor Based Transportation Plan

"Concept Location 5: McMurray Road Corridor Between US 19 And Morganza Road"

