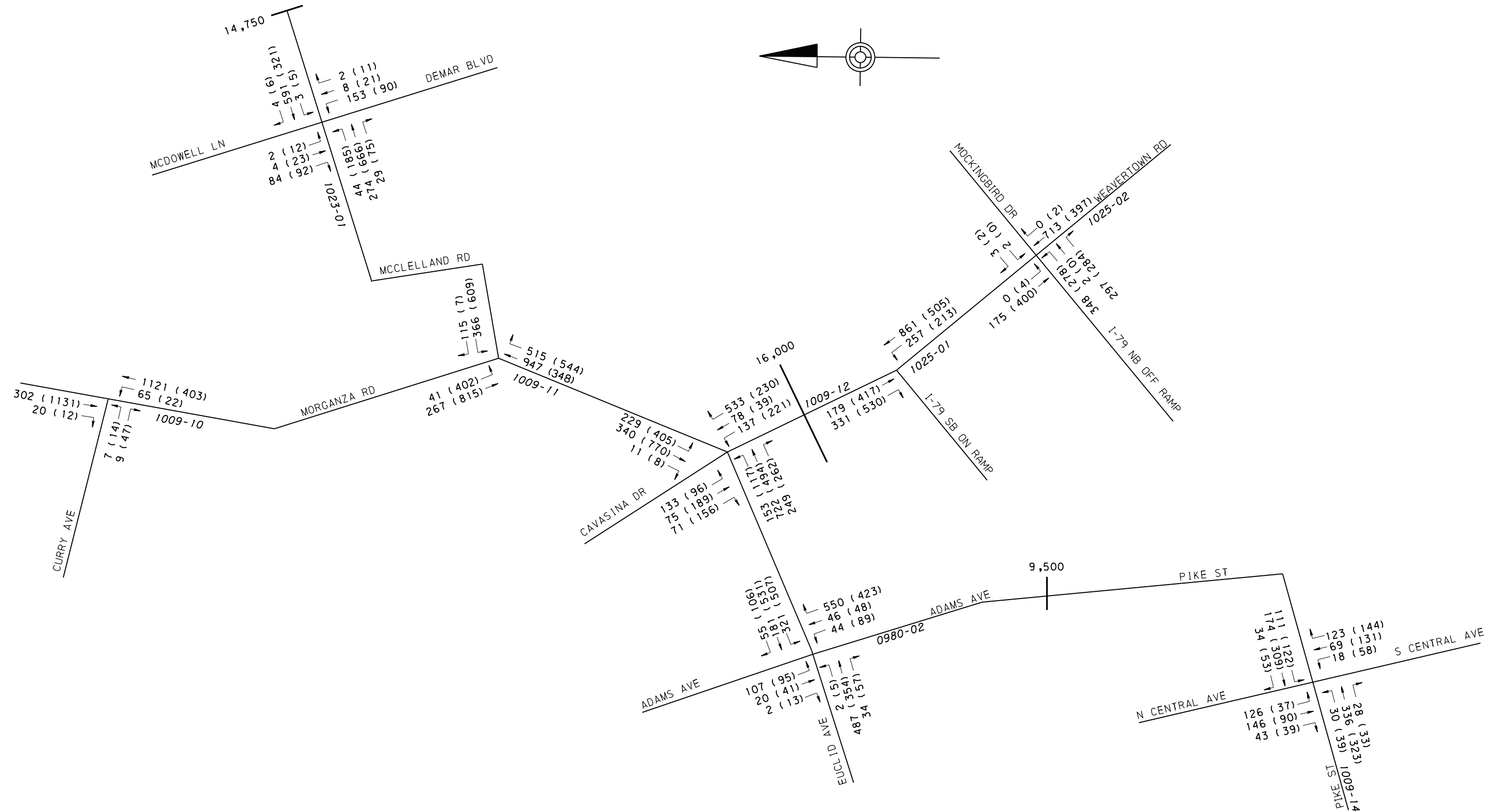
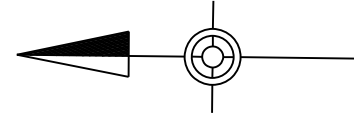


APPENDIX D

Traffic Volume Diagrams



TURNING MOVEMENT COUNT LEGEND

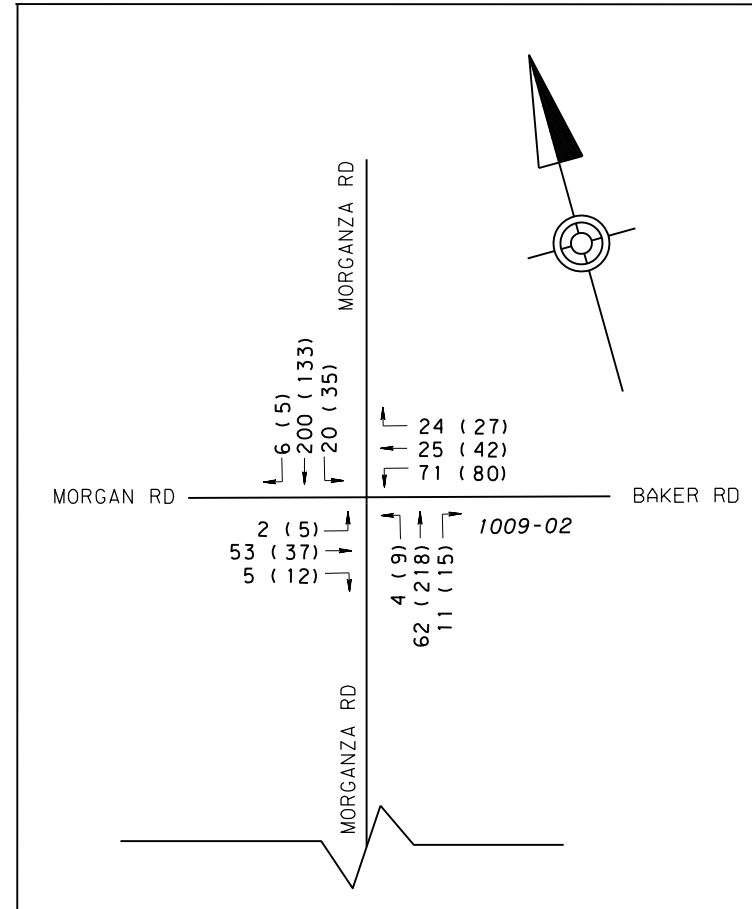
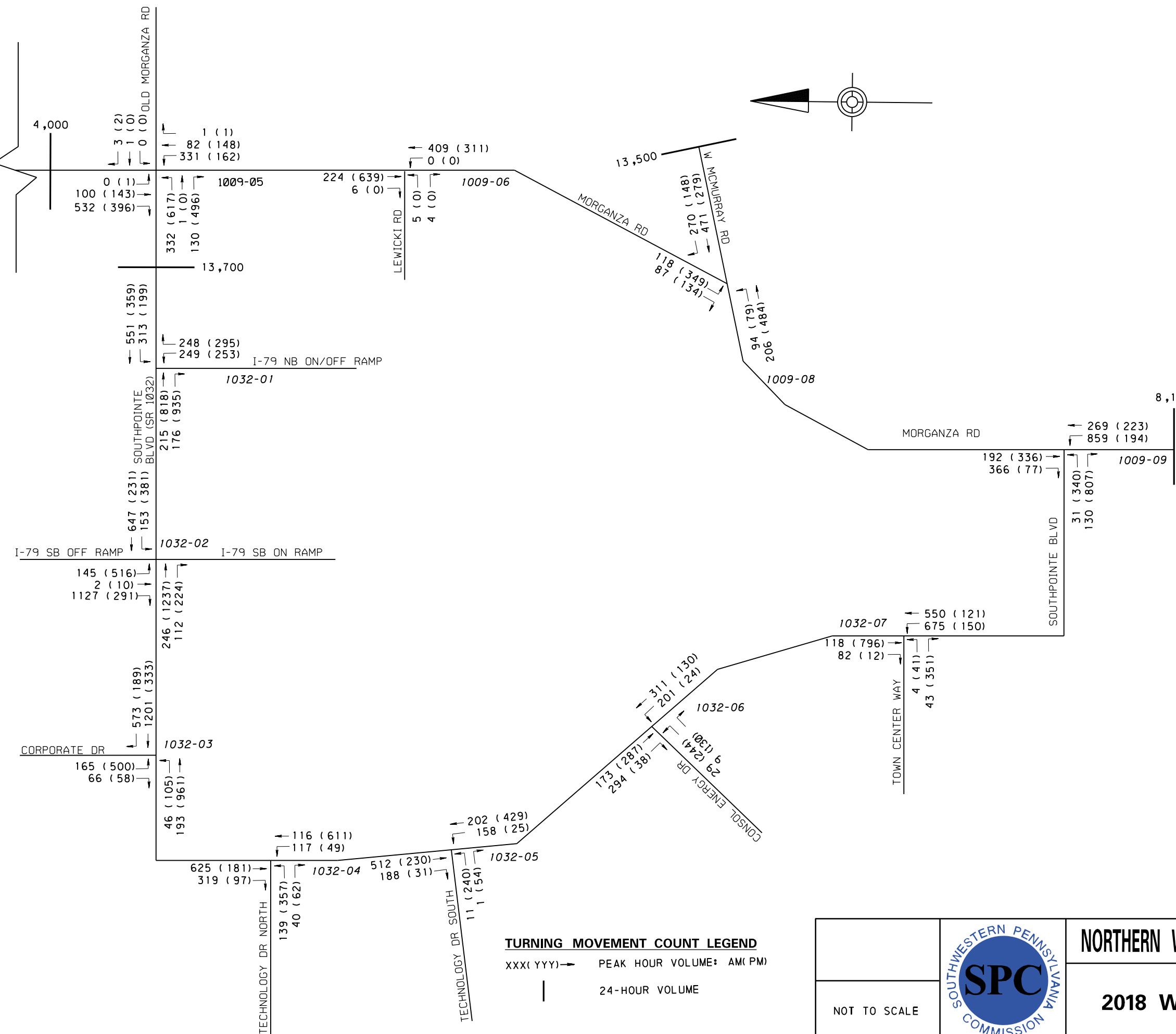
XXX(YYY)→ PEAK HOUR VOLUME: AM(PM)
 | 24-HOUR VOLUME

NOT TO SCALE



NORTHERN WASHINGTON COUNTY TRANSPORTATION PLAN

2018 Weekday Peak Hour Volumes

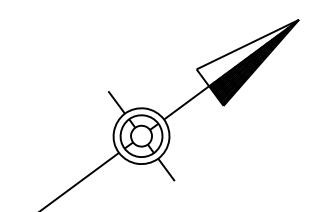
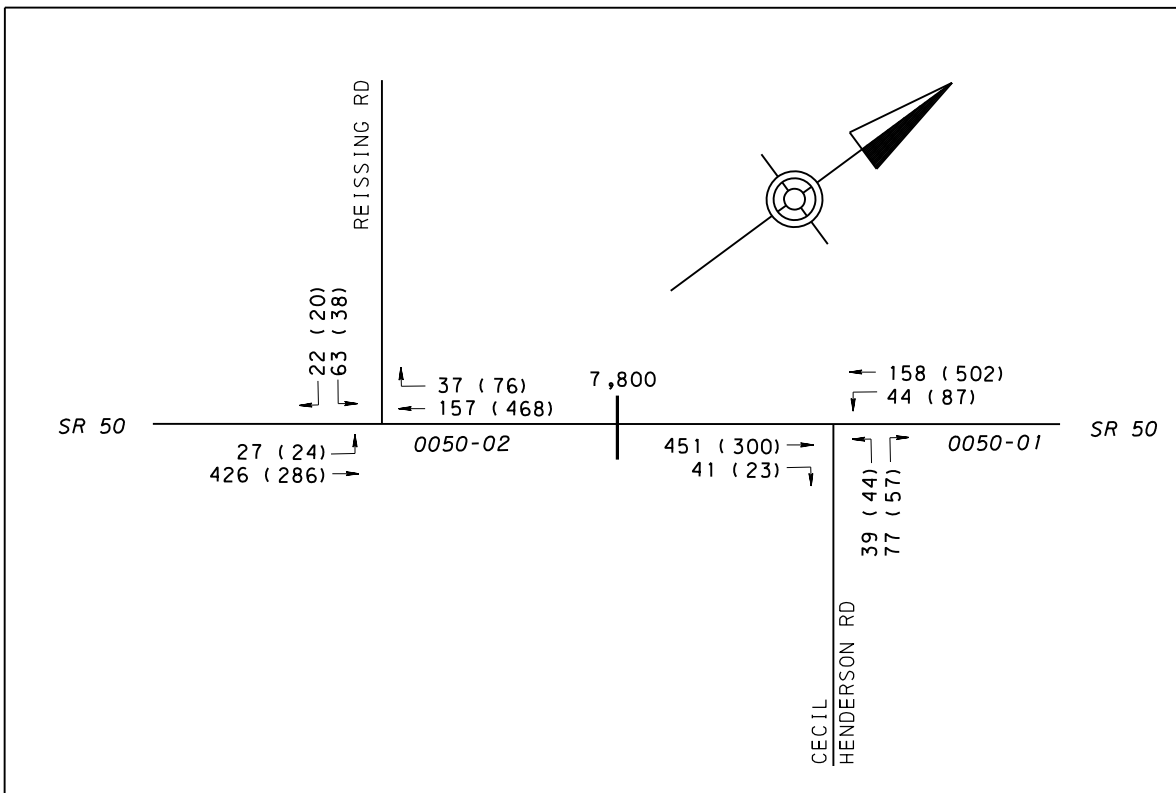
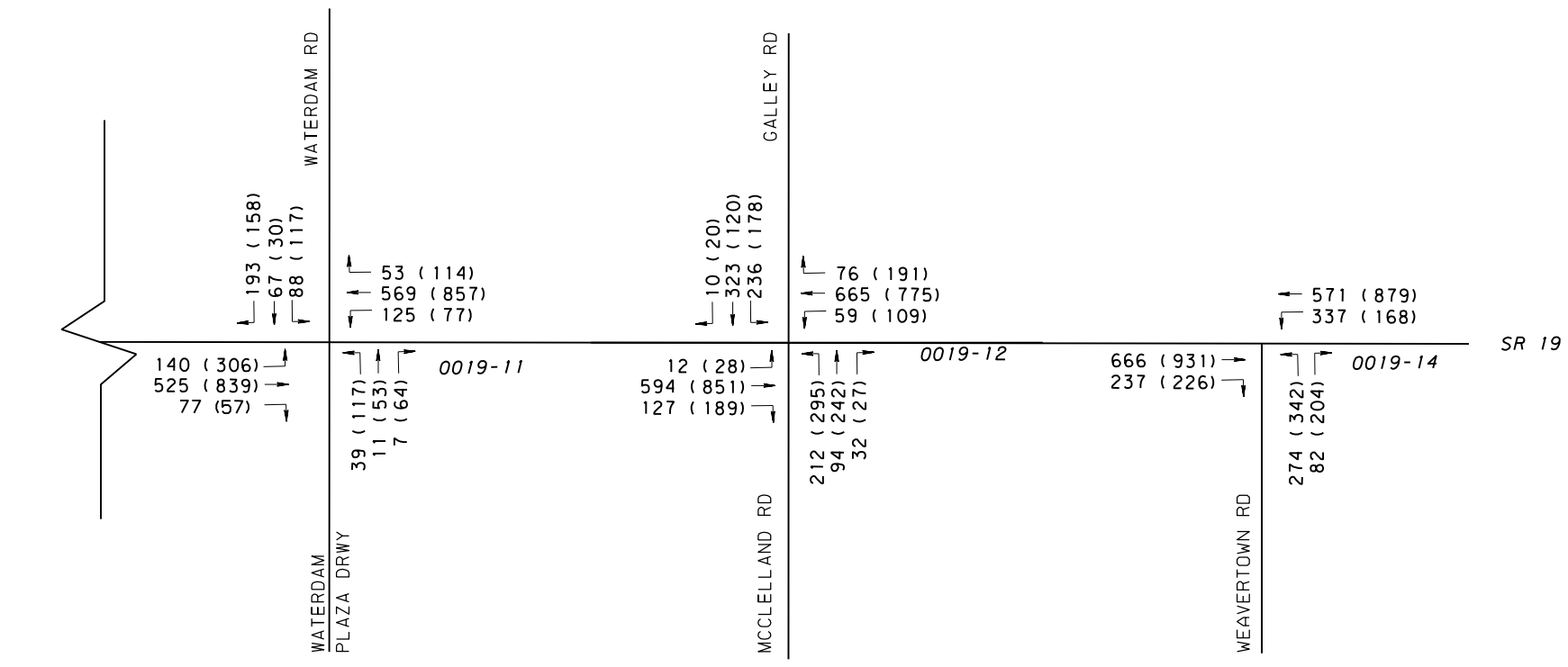
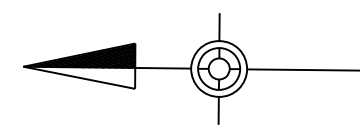
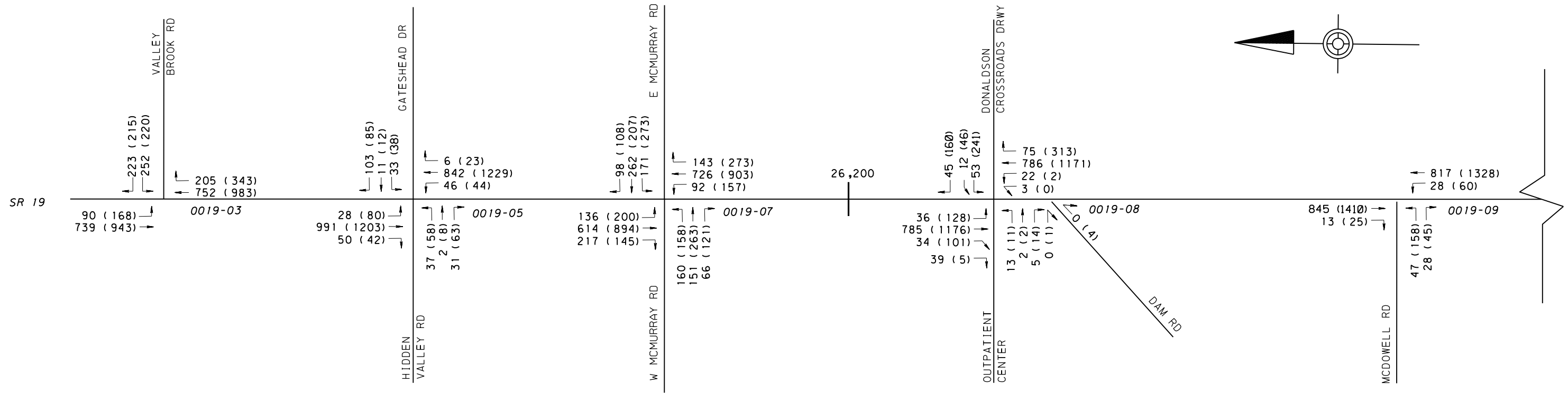


TURNING MOVEMENT COUNT LEGEND
 XXX(YYY) → PEAK HOUR VOLUME: AM(PM)
 | 24-HOUR VOLUME

NOT TO SCALE



NORTHERN WASHINGTON COUNTY TRANSPORTATION PLAN
2018 Weekday Peak Hour Volumes



TURNING MOVEMENT COUNT LEGEND

XXX(YYY)→ PEAK HOUR VOLUME: AM(PM)

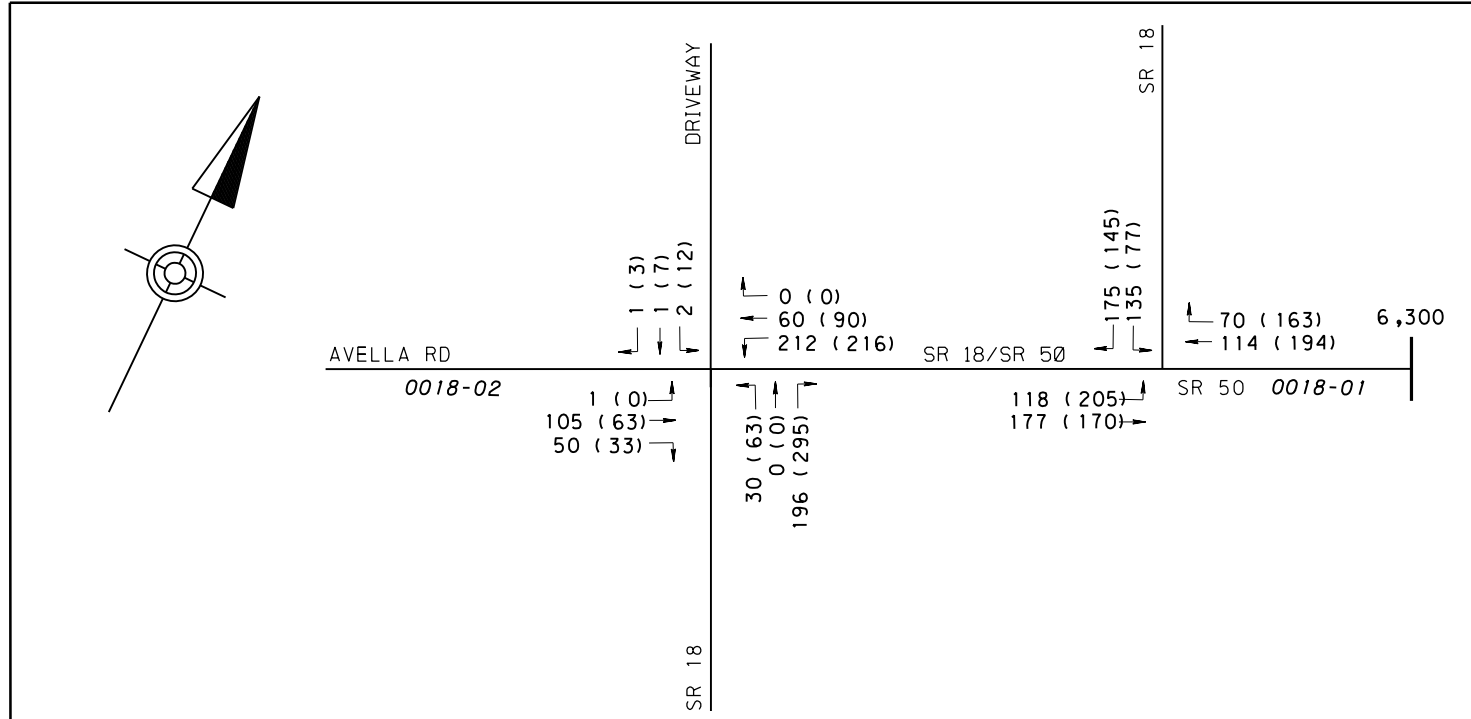
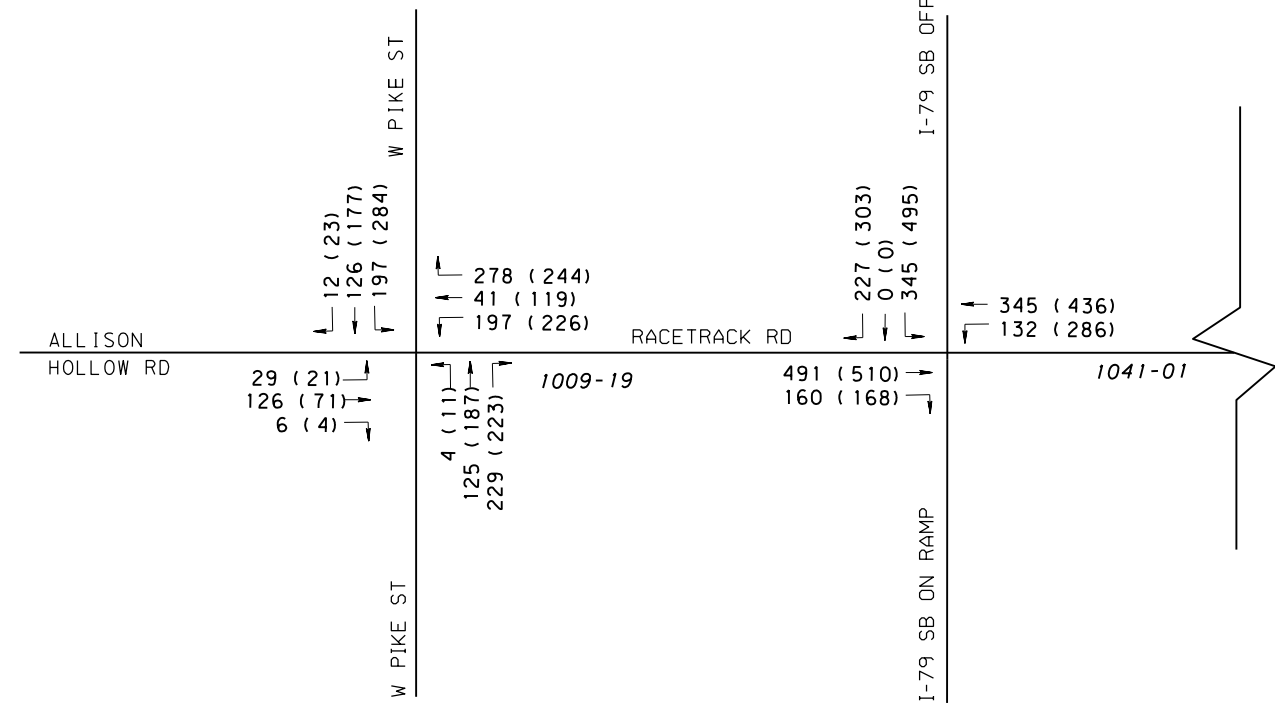
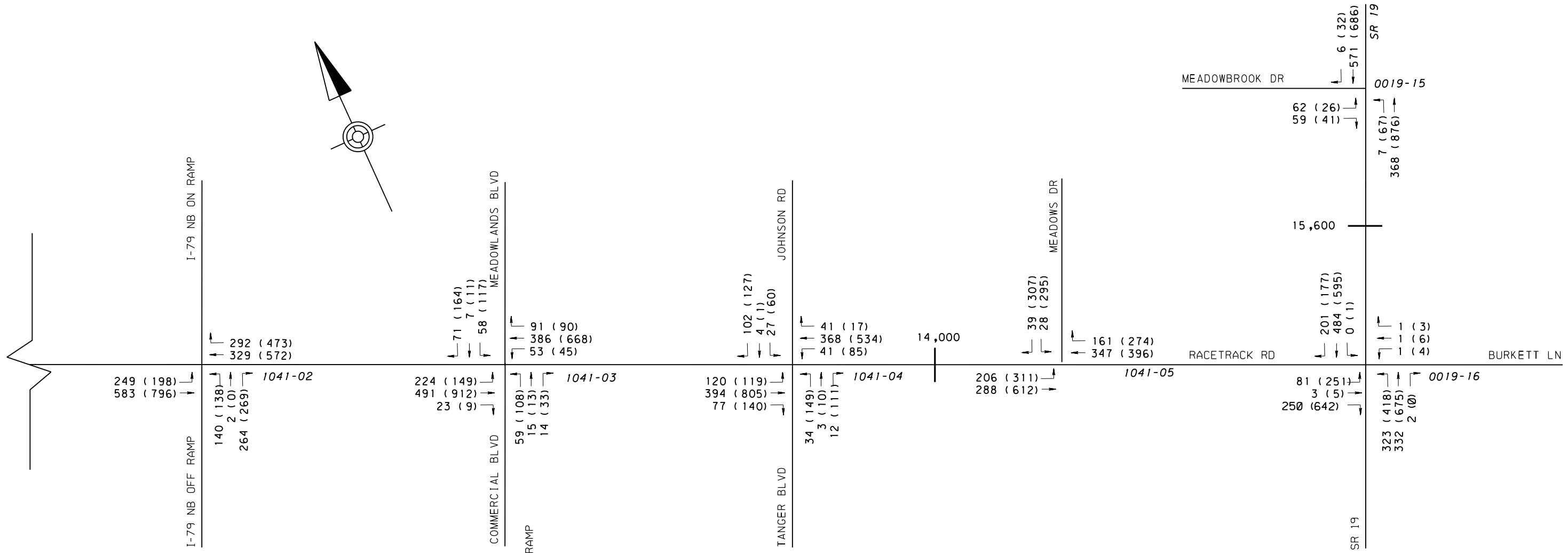
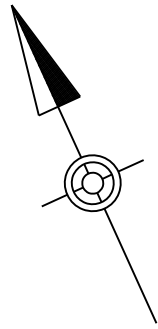
| 24 HOUR VOLUME

NOT TO SCALE



NORTHERN WASHINGTON COUNTY TRANSPORTATION PLAN

2018 Weekday Peak Hour Volumes



TURNING MOVEMENT COUNT LEGEND

XXX(YYY)→ PEAK HOUR VOLUME: AM(PM)

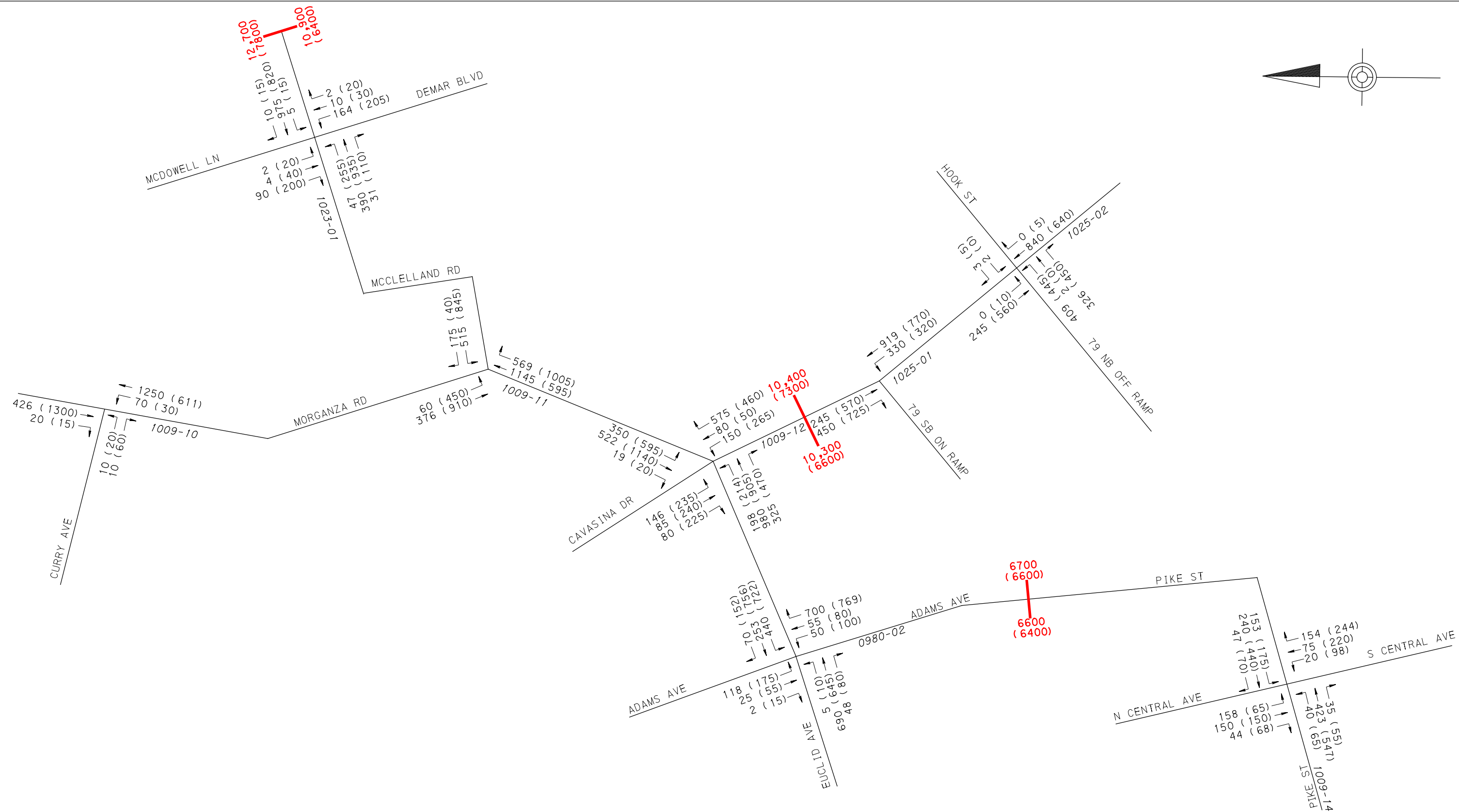
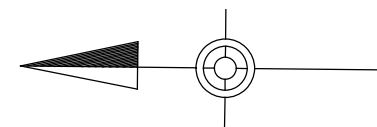
| 24 HOUR VOLUME

NOT TO SCALE



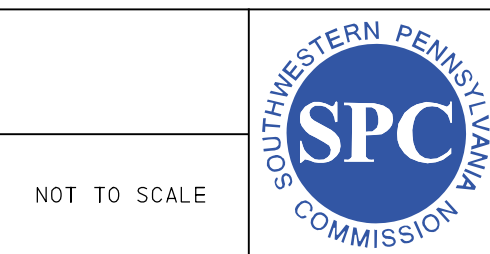
NORTHERN WASHINGTON COUNTY TRANSPORTATION PLAN

2018 Weekday Peak Hour Volumes



COUNT LEGEND

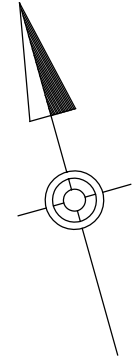
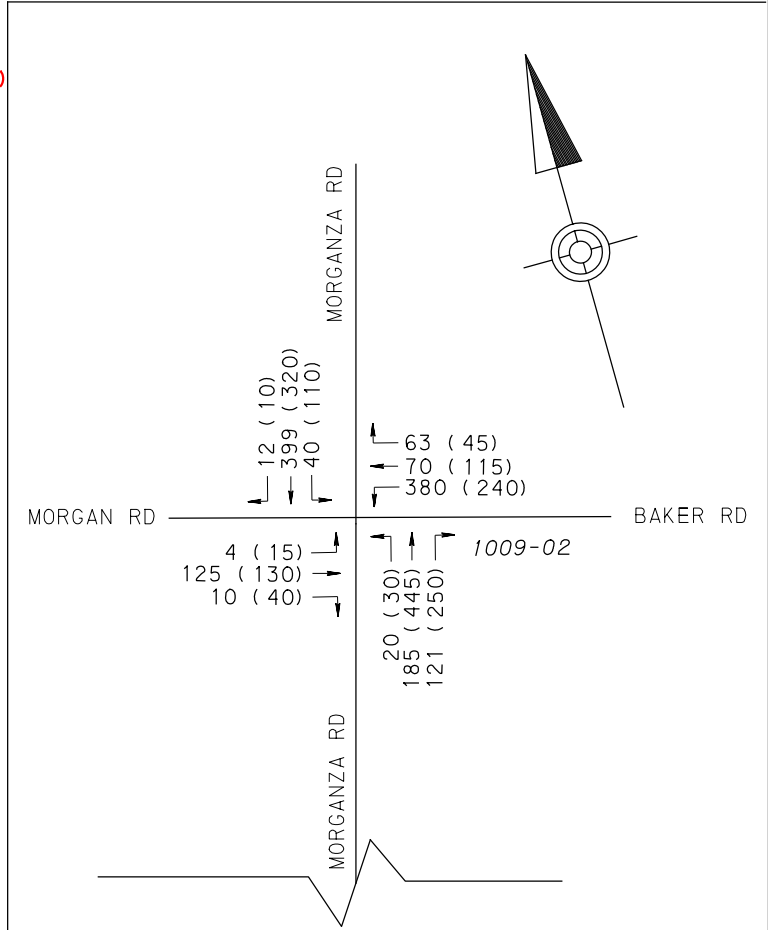
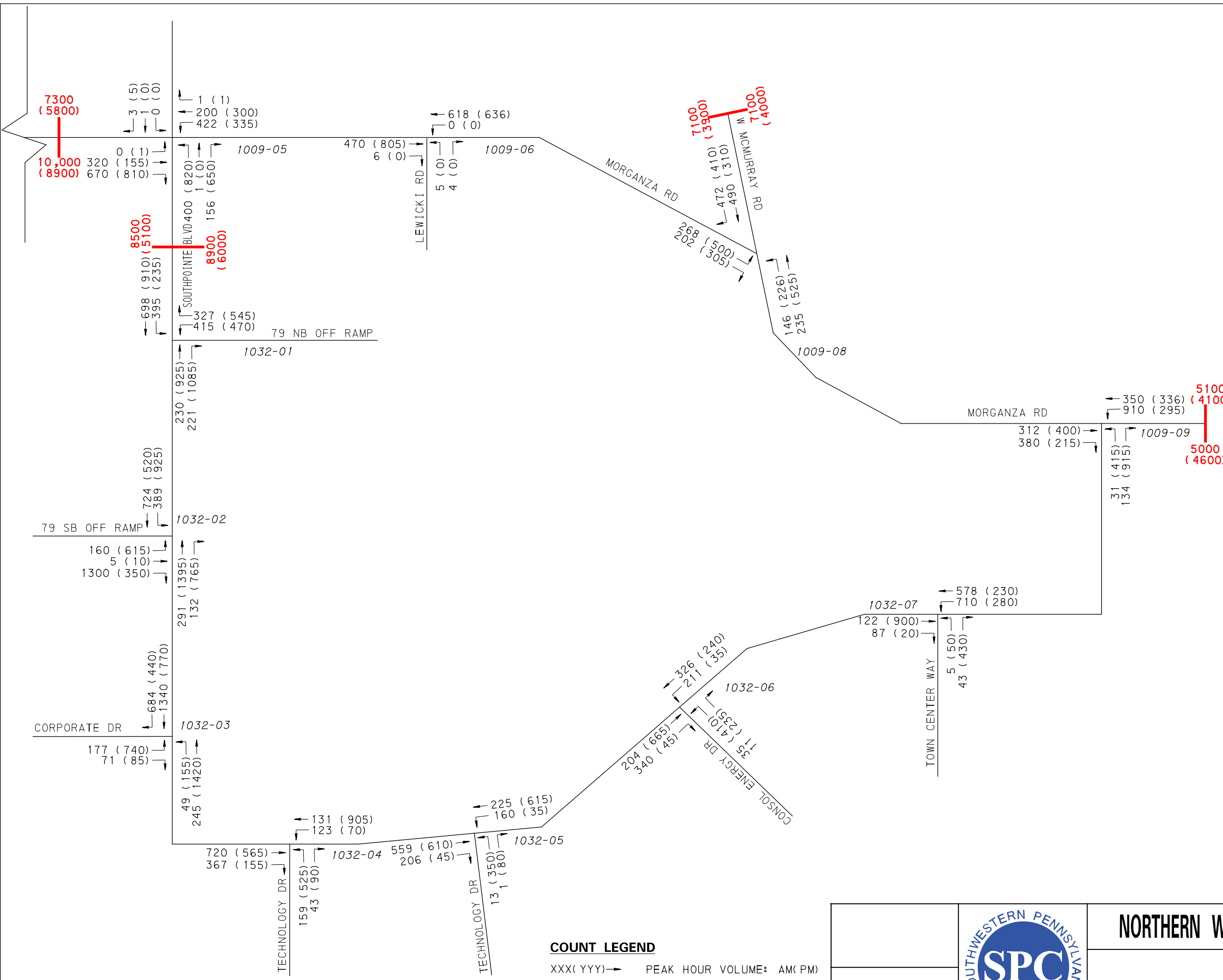
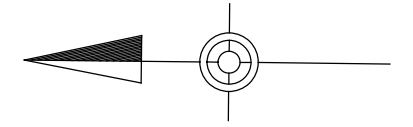
XXX(YYY)→ PEAK HOUR VOLUME: AM(PM)
 24 HOUR VOLUME:
 WITHOUT SB 79 TO MFE
 (WITH SB 79 TO MFE)



NORTHERN WASHINGTON COUNTY TRANSPORTATION PLAN

**2040
Traffic Volumes**

NOT TO SCALE

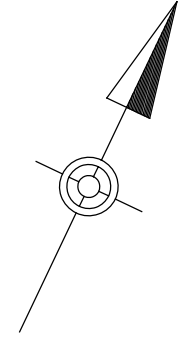
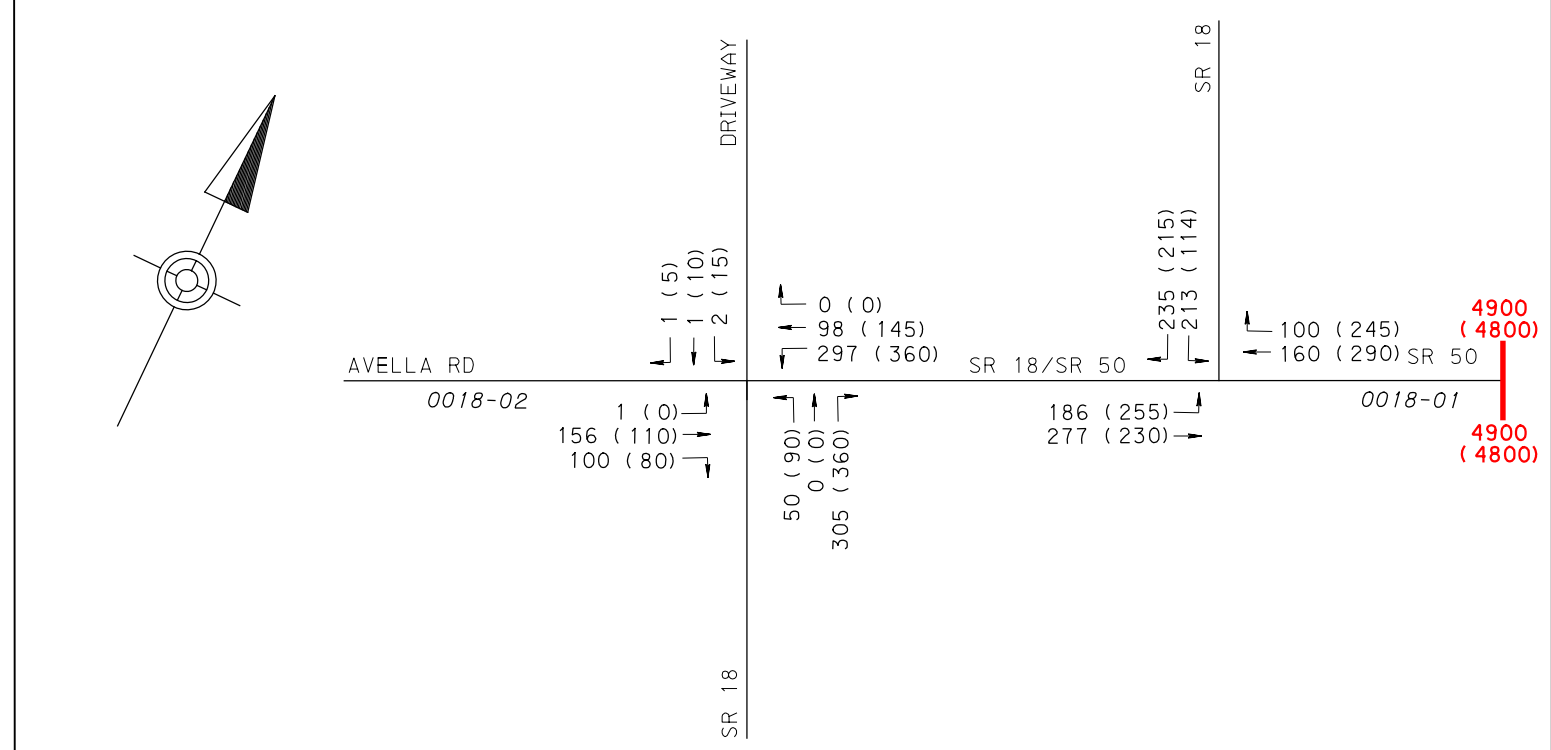
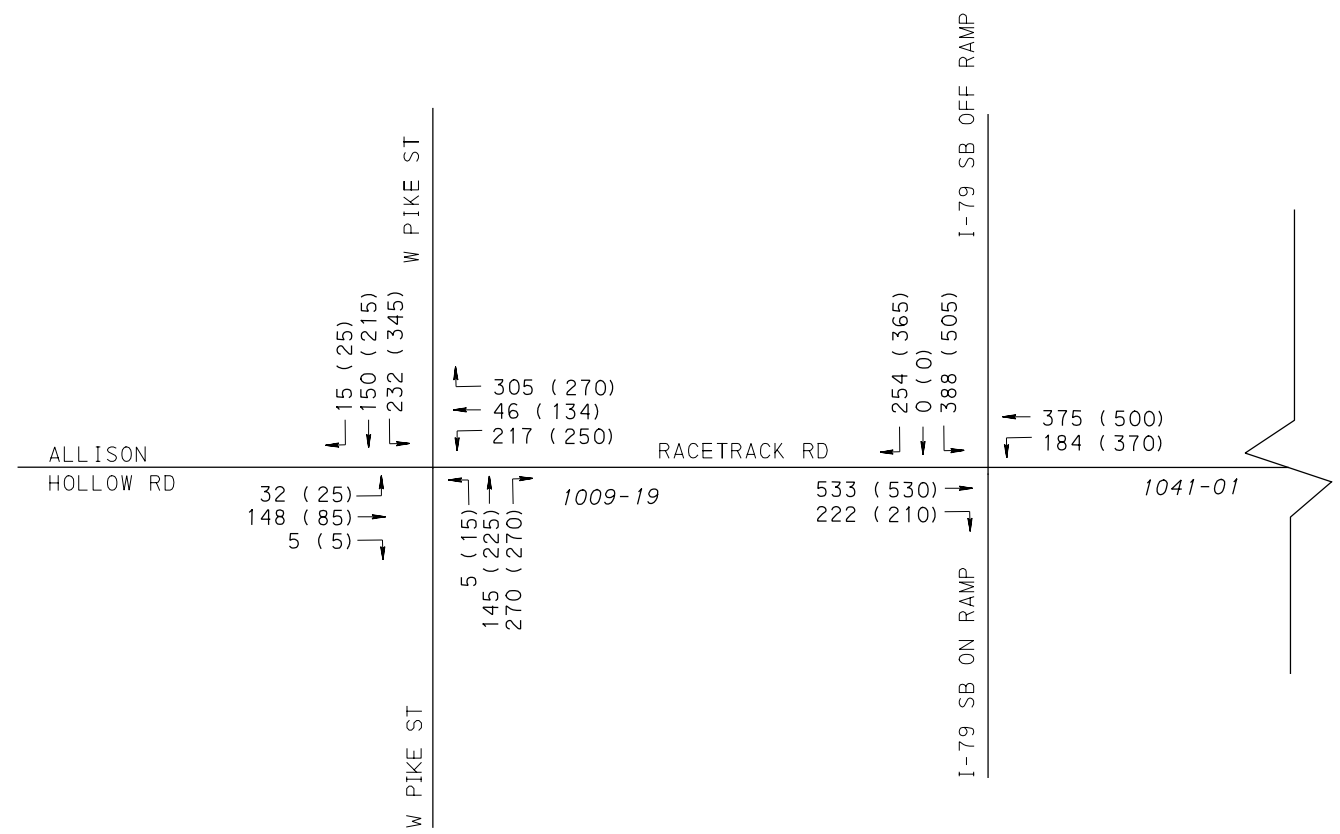
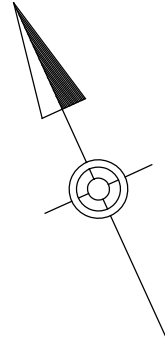
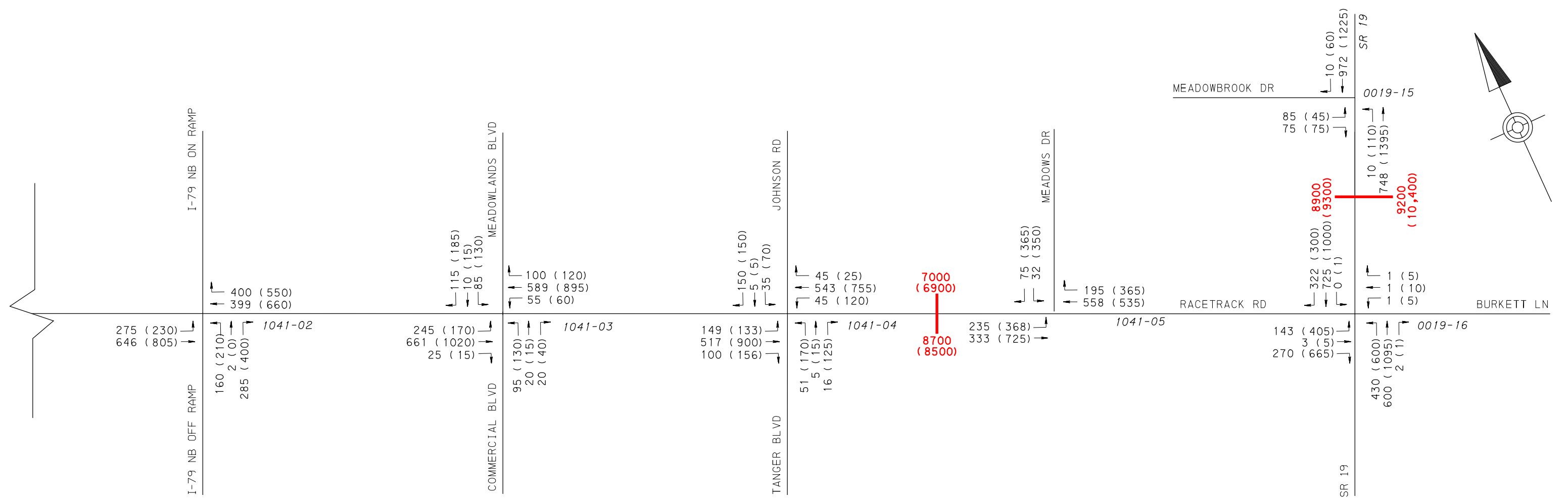


COUNT LEGEND
 XXX(YYY)→ PEAK HOUR VOLUME: AM(PM)
 | 24 HOUR VOLUME:
 | WITHOUT SB 79 TO MFE
 | (WITH SB 79 TO MFE)

NOT TO SCALE



NORTHERN WASHINGTON COUNTY TRANSPORTATION PLAN
2040
Traffic Volumes



COUNT LEGEND

XXX(YYY)→ PEAK HOUR VOLUME: AM(PM)

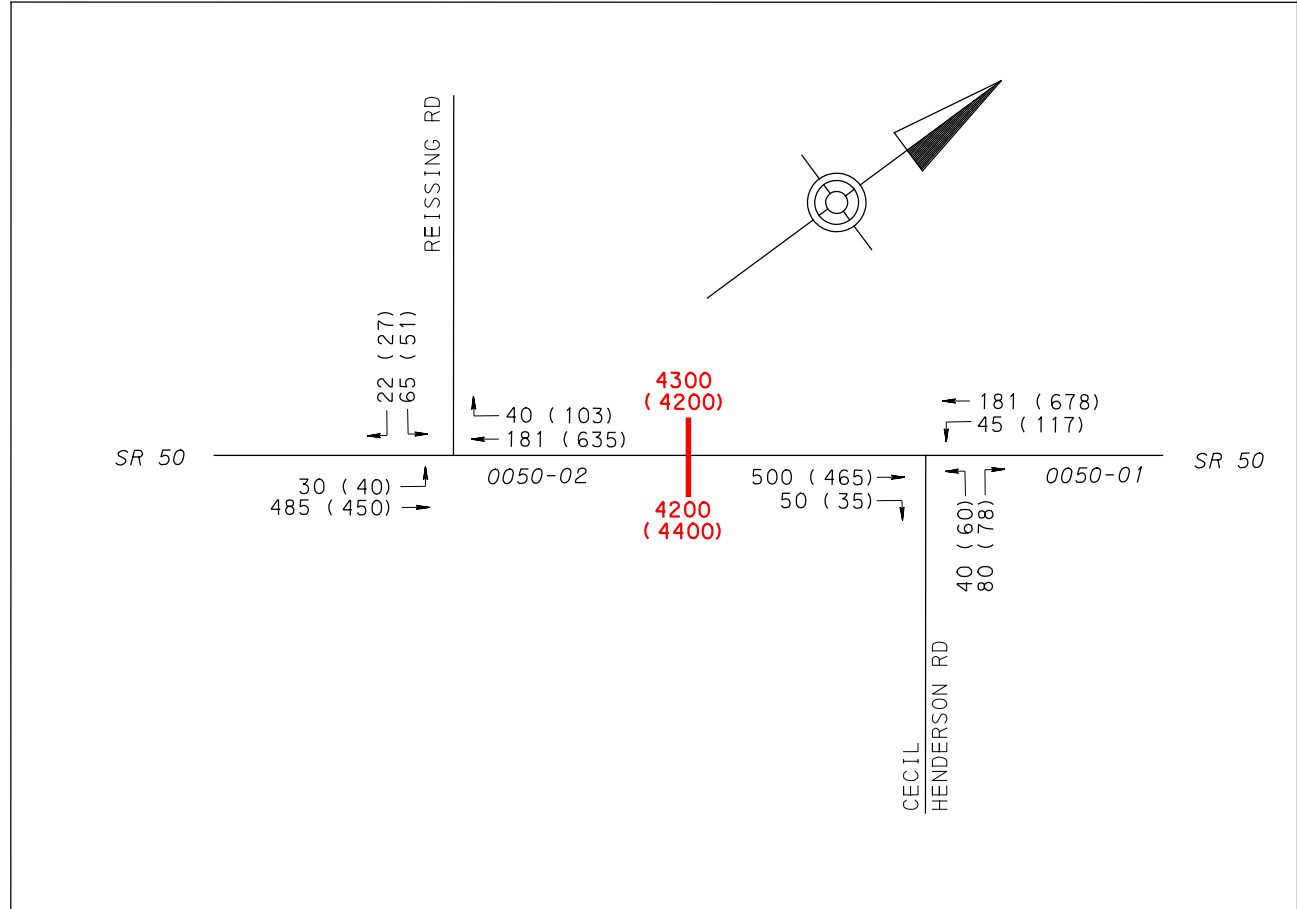
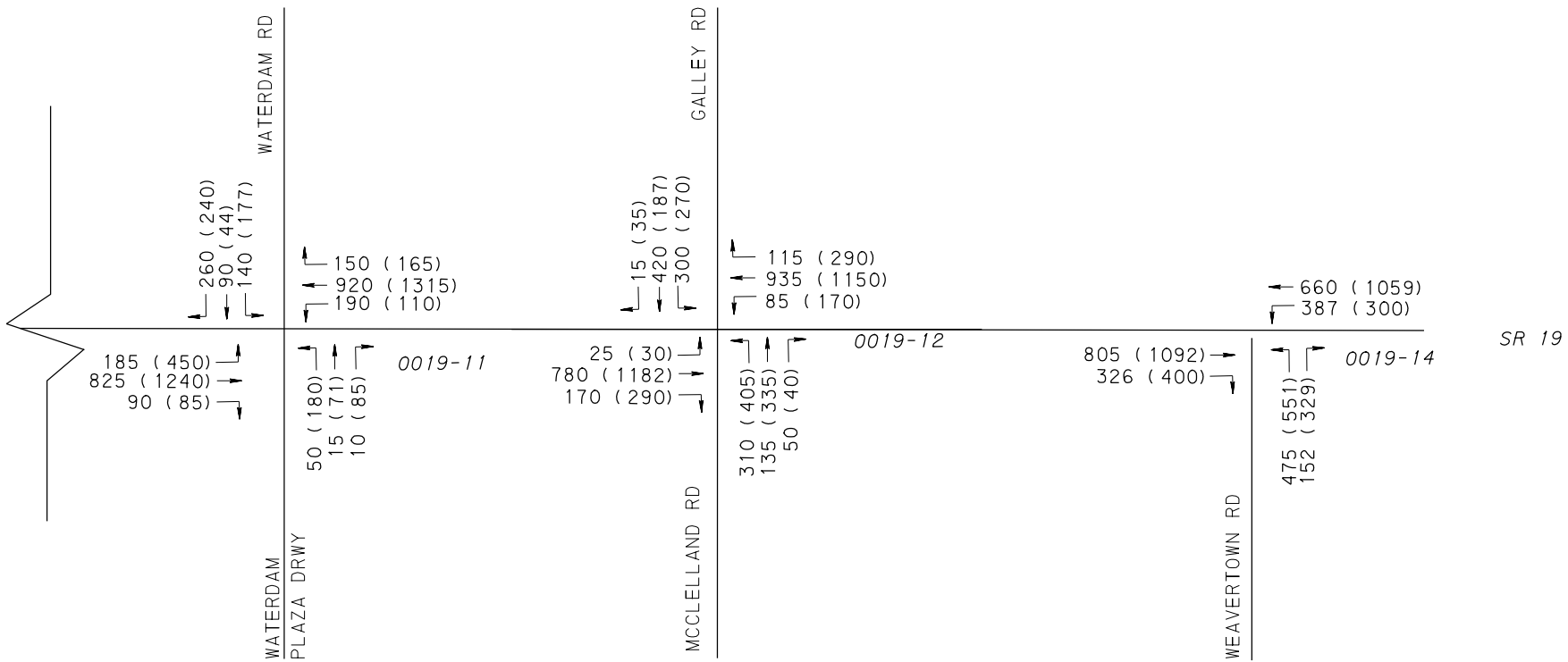
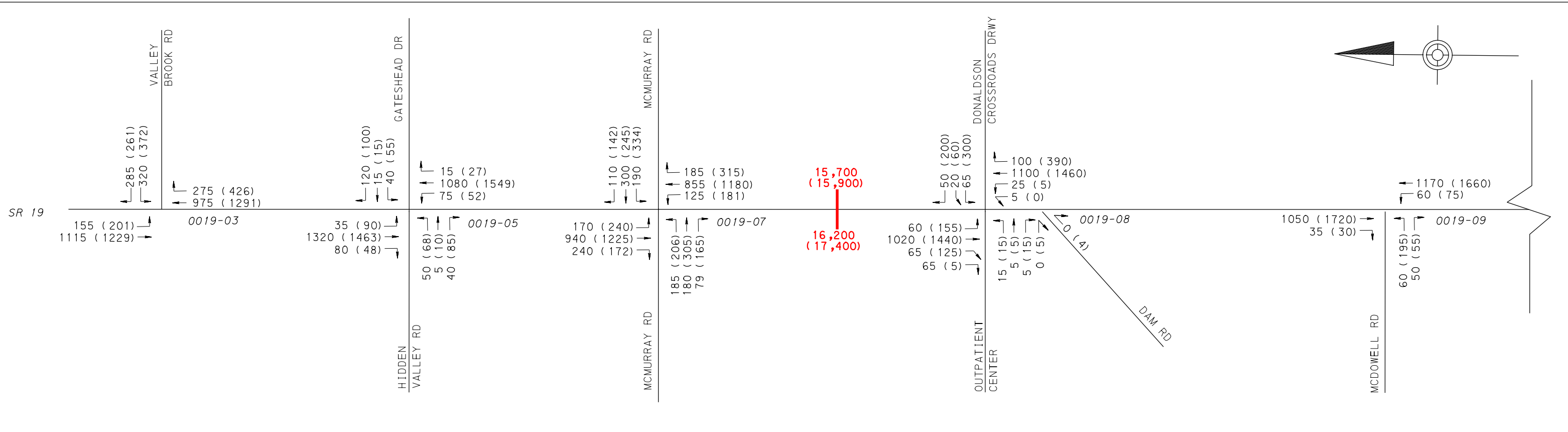
— 24 HOUR VOLUME:
WITHOUT SB 79 TO MFE
(WITH SB 79 TO MFE)

NOT TO SCALE



NORTHERN WASHINGTON COUNTY TRANSPORTATION PLAN

2040 Traffic Volumes



COUNT LEGEND

XXX(YYY)→ PEAK HOUR VOLUME: AM(PM)
 24 HOUR VOLUME:
 WITHOUT SB 79 TO MFE
 (WITH SB 79 TO MFE)

NOT TO SCALE



NORTHERN WASHINGTON COUNTY TRANSPORTATION PLAN

**2040
Traffic Volumes**